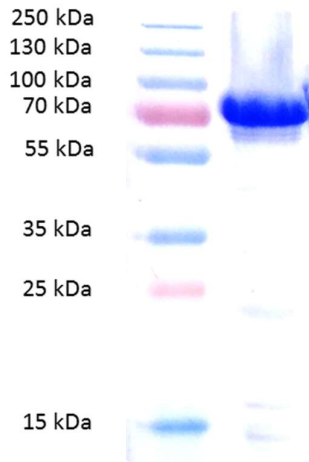


**High concentration**  
**High purity**  
**His-Tagged**  
**Formulation on request**



#### **Analytical :**

- 1 Western Blot/Dot Blot
  - 2 ELISA
  - 3 Lateral flow assay control
- Protocol available on request

#### **ORDER**

##### **rSLO in solution**

\* A192516-03 : 1mg/ml

**Other quantities and buffer  
available on request**

#### **Background**

The serum titers of anti-Streptolysin O (ASLO) may be of important diagnostic value in patients having a recent streptococcal group A infection (*Streptococcus pyogenes*), since the sequels of such infections include rheumatic fever, glomerulonephritis and erythema nodosum. Increased titers of ASLO develop after the second week of infection and reach a peak in 4 to 6 weeks: this peak usually occurs shortly after the onset of rheumatic fever. ASLO is present in most individuals in low titers since streptococcal infections are common. Therefore, comparison of ASLO -titers at (bi-) weekly intervals yields more valuable information than a single determination. Elevated or increasing ASLO titers are indicative of recent infection.

#### **Product**

Streptolysin O (SLO) is a single polypeptide chain that is not glycosylated. It has a molecular mass of ~69 kDa and an isoelectric point (pI) of 6.0-6.4. Streptolysin O is an immunogenic, oxygen-labile toxin, which is reversibly activated by dithiothreitol. It is released into the extracellular medium along with other toxins, including streptolysin S, during the growth of most strains of group A and many strains of groups C and G *Streptococci*.

#### **Technical data**

This protein is recombinant truncated SLO expressed in *Escherichia coli*. It is purified by Immobilized metal ion affinity chromatography. The protein theoretical size is 69 Kda.

This protein is 6 His tagged.

#### **Application**

This product can be used by RDT manufacturers.