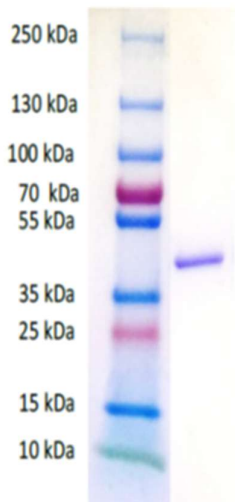


High concentration

High purity

His-Tagged

Formulation on request



Analytical :

- 1 Western Blot/Dot Blot
- 2 ELISA
- 3 Lateral flow assay control

Pf pLDH in solution

- * A130112-02 : 1mg/ml

Pf pLDH Lyophilised

- * A130112-02 - L : 0,1mg/vial

**Other quantities and buffer
available on request**

Background

Malaria is the most lethal parasitic disease in the world, annually affecting approximately 500 million people and resulting in 800,000 deaths, mostly in African sub-Saharan countries [1]. The disease is transmitted most commonly by an infected female *Anopheles* mosquito. Five species of *Plasmodium* can infect and be spread among humans.[2] Most deaths are caused by *P. falciparum* because *P. vivax*, *P. ovale*, and *P. malariae* generally cause a milder form of malaria [2] [3]. Malaria is typically diagnosed by the microscopic examination of blood using blood films, or with antigen-based rapid diagnostic tests [2]. There are currently over 20 such tests commercially available (WHO product testing 2008). Antigens suitable as target for Rapid Diagnostic Tests (RDTs) are Glutamate dehydrogenase (pGluDH),

Product

P. falciparum lactate dehydrogenase (PfLDH) is a oxidoreductase [EC 1.1.1.27] [4]. It is the last enzyme of the glycolytic pathway, essential for ATP generation and one of the most abundant enzymes expressed by *P. falciparum* [5]. *Plasmodium* LDH (pLDH) from *P. vivax*, *P. malariae*, and *P. ovale* exhibit 90-92% identity to PfLDH from *P. falciparum* [6].

Technical data

This protein is recombinant *Plasmodium falciparum* L-lactate dehydrogenase expressed in *Escherichia coli*. It is purified by Immobilized metal ion affinity chromatography.

The theoretical size of the protein is 36Kda.

This protein is 6 His tagged.

Application

This product can be used by RDT manufacturers.

Literature

- 1 W.H.O. (2010) World Malaria Report 2010.