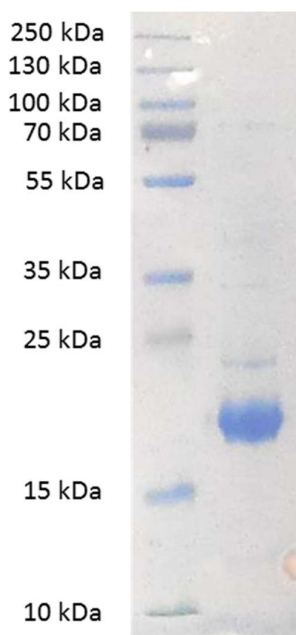


rTp17 (Syphilis)



Soluble form
High concentration
High purity
His-Tagged
Formulation on request



Applications

- 1 Western Blot/Dot Blot
 - 2 ELISA
 - 3 Lateral flow assay control
- Protocol available on request

Background

Syphilis is a sexually transmitted infection caused by the spirochete bacterium *Treponema pallidum* subspecies *pallidum*. The primary route of transmission is through sexual contact. Syphilis is thought to have infected 12 million additional people worldwide in 1999, with greater than 90% of cases in the developing world.

Syphilis is difficult to diagnose clinically early in its presentation.[1] Confirmation is either via blood tests or direct visual inspection using microscopy. Blood tests are more commonly used, as they are easier to perform.[2] Several highly immunogenic lipoproteins have been identified as diagnostic targets throughout all stages of a syphilis infection, including Tp17, Tp15, Tp44.5 (TmpA), Tp47, Tp41 and Tp35 (TmpC). Specifically, early immune responses are against TpN47 and some of the flagellar proteins, followed by Tp15 and Tp17.

Product

Among the periplasmic lipoproteins, Tp17 is encoded by the *tpp17* gene, with a molecular weight of 17 kDa. Previous studies showed that Tp17 was a strong membrane immunogen, reacting intensely with human syphilitic sera [3]. Tp17, along with Tp15, Tp47, and other specific *T. pallidum* antibodies, is used to diagnose syphilis [4], [5] and [6].

Technical data

This protein is recombinant Tp17 from *Treponema pallidum* expressed in *Escherichia coli*. It is purified by Immobilized metal ion affinity chromatography. The protein theoretical size is 17Kda.

This protein is 6 His tagged.

References

This product is used by RDT manufacturers.

Literature

- 1 Eccleston, K; Collins, L; Higgins, SP (March 2008). "Primary syphilis". *International journal of STD & AIDS* 19 (3): 145–51
- 2 Kent ME, Romanelli F (February 2008). "Reexamining syphilis: an update on epidemiology, clinical manifestations, and management". *Annals of Pharmacotherapy* 42 (2): 226–36
- 3 R. Sun, D.H. Lai, R.X. Ren, S. Lian, H.P. Zhang. *Treponema pallidum*-specific antibody expression for the diagnosis of different stages of syphilis. *Chin Med J (Engl)*, 126 (2) (2013), pp. 206–210
- 4 Q. Dang, J. Feng, X. Lu, X. Zhang, H. Xu, C. Liu, et al. Evaluation of specific antibodies for early diagnosis and management of syphilis. *Int J Dermatol*, 45 (10) (2006), pp. 1169–1171
- 5 L.R. Lin, M.L. Tong, Z.G. Fu, B. Dan, W.H. Zheng, C.G. Zhang, et al. Evaluation of a colloidal gold immunochromatography assay in the detection of *Treponema pallidum* specific IgM antibody in syphilis serofast reaction patients: a serologic marker for the relapse and infection of syphilis. *Diagn Microbiol Infect Dis*, 70 (1) (2011), pp. 10–16
- 6 V. Sambri, A. Marangoni, M.A. Simone, A. D'Antuono, M. Negosanti, R. Cevenini, et al. Evaluation of recomWell *Treponema*, a novel recombinant antigen-based enzyme-linked immunosorbent assay for the diagnosis of syphilis. *Clin Microbiol Infect*, 7 (4) (2001), pp. 200–205

Order

Tp17 0.01M Sodium Phosphate, 0.15M NaCl buffer pH7.4, 1M sucrose, NaN3 0.09%

- * A192516-01 - 100µg
- * A192516-01 - 500µg
- * A192516-01 - 1mg

Other quantities and buffer available on request