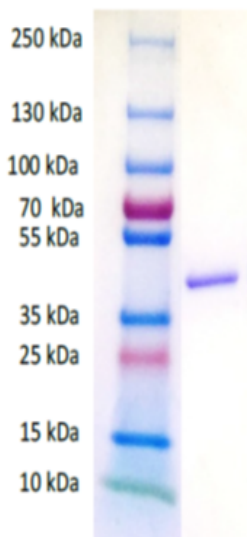


**High concentration**

**High purity**

**His-Tagged**

**Formulation on request**



### Analytical :

- 1 Western Blot/Dot Blot
- 2 ELISA
- 3 Lateral flow assay control

### Pf pLDH in solution

- \* A130112-02 : 1mg/ml

### Pf pLDH Lyophilised

- \* A130112-02 – L : 0,1mg/vial

**Other quantities and buffer  
available on request**

## Background

Malaria is the most lethal parasitic disease in the world, annually affecting approximately 500 million people and resulting in 800,000 deaths, mostly in African sub-Saharan countries [1]. The disease is transmitted most commonly by an infected female *Anopheles* mosquito. Five species of *Plasmodium* can infect and be spread among humans.[2] Most deaths are caused by *P. falciparum* because *P. vivax*, *P. ovale*, and *P. malariae* generally cause a milder form of malaria [2] [3]. Malaria is typically diagnosed by the microscopic examination of blood using blood films, or with antigen-based rapid diagnostic tests [2]. There are currently over 20 such tests commercially available (WHO product testing 2008). Antigens suitable as target for Rapid Diagnostic Tests (RDTs) are Glutamate dehydrogenase (pGluDH),

## Product

*P. falciparum* lactate dehydrogenase (PfLDH) is a oxidoreductase [EC 1.1.1.27] [4]. It is the last enzyme of the glycolytic pathway, essential for ATP generation and one of the most abundant enzymes expressed by *P. falciparum* [5]. *Plasmodium* LDH (pLDH) from *P. vivax*, *P. malariae*, and *P. ovale* exhibit 90-92% identity to PfLDH from *P. falciparum* [6].

## Technical data

This protein is recombinant *Plasmodium falciparum* L-lactate dehydrogenase expressed in *Escherichia coli*. It is purified by Immobilized metal ion affinity chromatography.

The theoretical size of the protein is 36Kda.

This protein is 6 His tagged.

## Application

This product can be used by RDT manufacturers

## Literature

- 1 W.H.O. (2010) World Malaria Report 2010.